

Sound Reinforcement Subwoofer

MAIN FEATURES

- Bass-reflex subwoofer
- 18" B&C high excursion woofer with 4" voice coil
- Recommended amplifier: 2500W RMS / 4Ohm
- Frequency response (@-6dB): 30Hz – preset dependant
- MAX SPL: 143dB (half -space)
- 0.70" Birch plywood cabinet with anti-scratch varnish
- Handles with rubber inserts and rubber-coated sides to protect the cabinet from bumps and scratches
- Two M20 stand sockets
- Six diecast aluminium carrying handles
- Predisposed for 4 x 4" swivel casters
- 2 x Neutrik NL4M Speakon connectors In & link
- Ideal for reinforcing and extending the low range of the VHA 406, VHA 112S system



DESCRIPTION

The HORIZON VHA 118S is a sound reinforcement subwoofer in a bass-reflex design, featuring an 18" B&C high-excursion woofer with a 4" voice coil and a recommended amplifier power of 2500W / 4 Ohms, capable of achieving 143dB SPL in half space. The bass-reflex cabinet delivers substantial energy down to 30Hz and is ideal for extending and reinforcing low frequencies in combination with the VHA line array systems. There is no internal crossover. Using external DSP with FBT presets in mandatory and allows for creating various configurations, with standard or cardioid directivity. The construction materials of HORIZON VHA 118S meet the highest professional standards to ensure maximum reliability; the cabinet is constructed from 0.70" birch plywood with a textured black finish, featuring six die-cast aluminium carrying handles and a scratch-resistant coating for stackability. A sturdy metal grille protects the front of the HORIZON VHA 118S. The rear-facing predisposes 4 x 4" for swivel casters and input panel provides two Neutrik NL4M Speakon connectors In & link. In addition, the cabinet is equipped with two M20 stand sockets for horizontal or vertical use and 4 support points set up to accommodate accessories in the ground-stack configuration in conjunction with VHA 406, VHA 112S and MUSE 210 models.

TECHNICAL SPECIFICATIONS

GENERAL

Code		45261
Configuration	way	Bass-reflex
Low frequency woofer	inch	18 - 4 coil
High frequency driver	inch	---

ACOUSTIC SPECIFICATIONS

Frequency response (@-6dB)	Hz	30 - preset dependant
Sensitivity (@1W/1m)	dB	---
MAX SPL (cont/peak)	dB	137 / 143 (half-space)
Dispersion	H° x V°	Omnidirectional
Recommended HP filter	Hz - dB oct	30 - 24
Recommended Ext. filter		Authorized FBT preset for digital processor or processed amplifier

INPUTS & OUTPUTS

Input connectors		2 x Speakon NL4M In & link
------------------	--	----------------------------

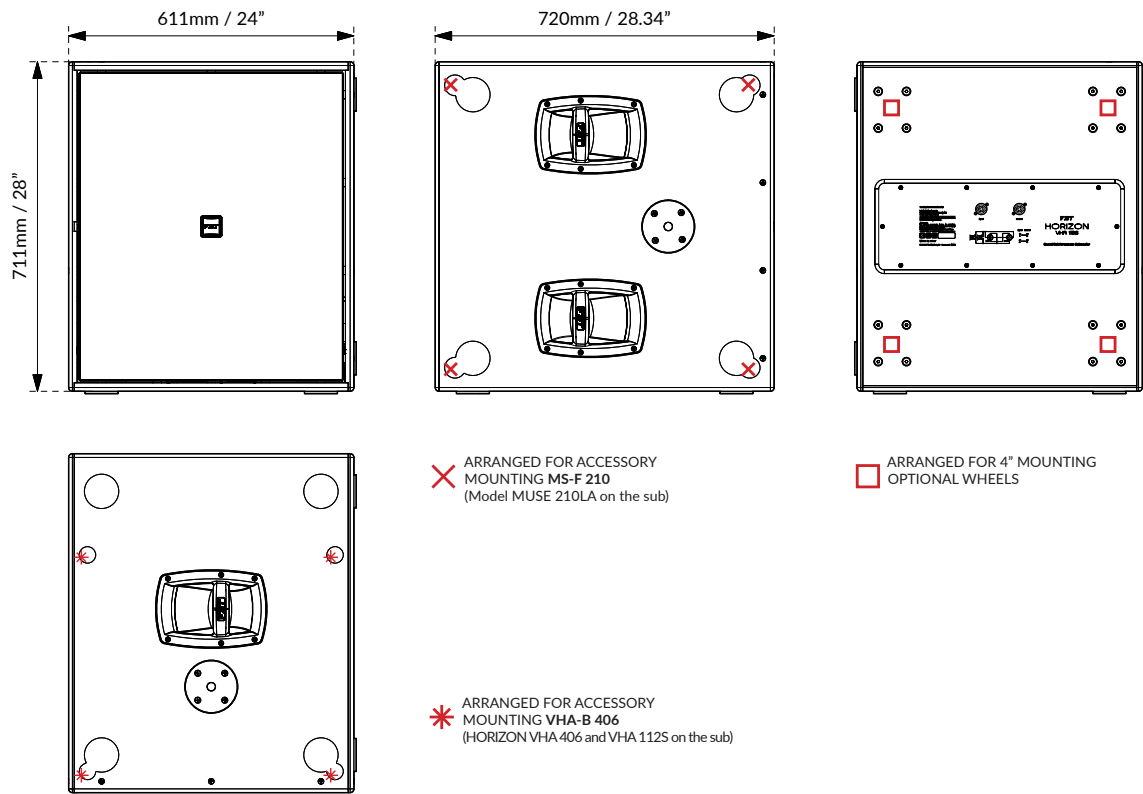
AMPLIFIER

Recommended amplifier	W RMS	2500
Long term power	W	1000
Short term power (IEC 268-5)	W	5000
Nominal impedance	Ohm	4

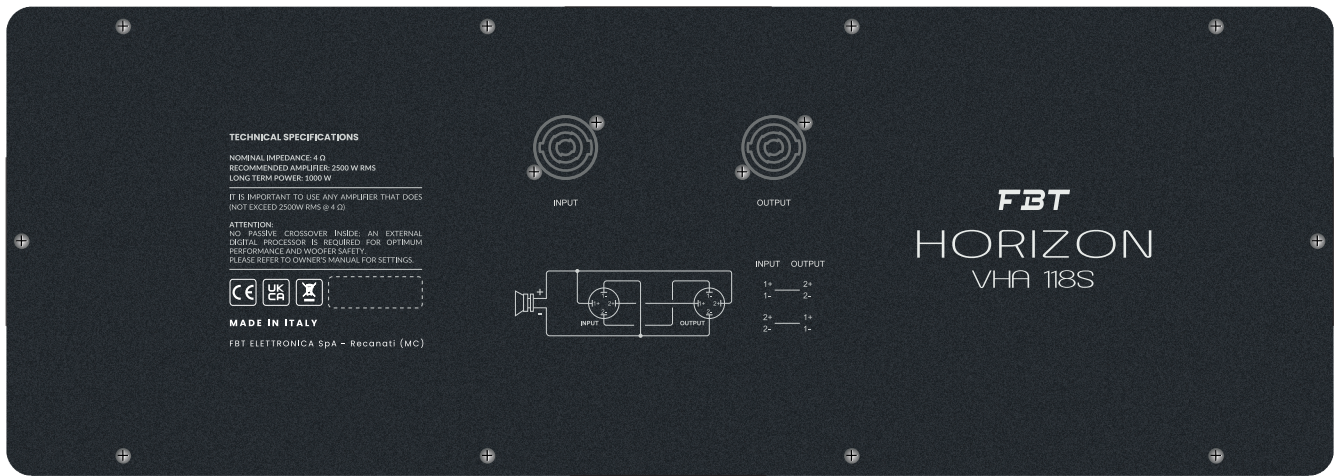
MECHANICAL SPECIFICATIONS

Material	Cabinet	0.70" Birch plywood
	Grille	Metal
Net dimensions (WxHxD)	mm	611 x 711 x 720
	inch	24 x 28 x 28.34
Transport dimensions (WxHxD)	mm	810 x 900 x 710
	inch	31.89 x 35.43 x 27.95
Net weight	kg	62.75
	lb	138.34
Transport weight	kg	72.75
	lb	160.38

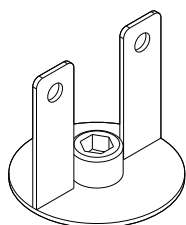
DIMENSIONAL DRAWING



CONTROL PANEL



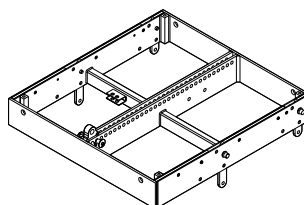
ACCESSORIES



MS-J 210

Metal Joint
Code: 39401

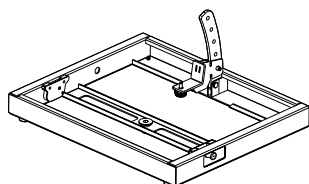
ø100 x 92mm
ø3.93 x 3.62inch
0.50 kg / 1.10 lb



MS-F 210

Flying Bar
Code: 38834

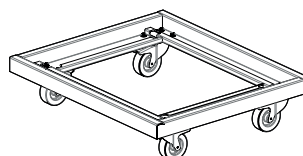
686 x 100 x 652mm
27 x 3.93 x 25.66inch
30 kg / 66.13 lb



VHA-B 406

Metal Base
Code: 41783

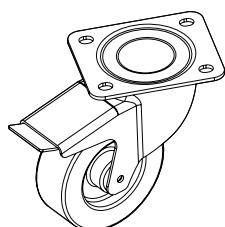
606 x 73 x 502mm
23.85 x 2.87 x 19.76inch
10.30 kg / 22.70 lb



VHA-T 118

Trolley with Wheels
Code: 42590

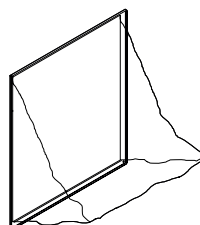
785 x 181 x 670mm
30.9 x 7.12 x 26.37inch
18.80 kg / 41.44 lb



KBW-1004S

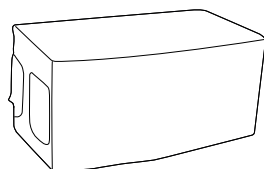
4 Wheels Kit with Brake
Code: 25197

ø100mm
ø4inch
4 kg / 8.81 lb



VHA-RC 118

Rain Cover
Code: 42465



VHA-C 118S

Nylon Cover without Wheels

VHA-CH 118S

Nylon Cover with Wheels