

# Processed Active Subwoofer

## MAIN APPLICATIONS

Permanent installations in:

- Touring sound reinforcement
- Theatres, Stadiums, Concert halls, Arenas ...
- Ideal for both live applications assisted by one or both subs of the HORIZON VHA range.

## MAIN FEATURES

- Self powered bass-reflex cabinet
- Class D 2500W amplifier
- 1 x 18" woofer with 4" coil
- Easy transport by 6 handles and predisposition for 4 wheels
- Cabinet in 0,70" birch plywood with anti-scratch varnish
- Wide range of accessory
- Completely manufactured in Italy



## DESCRIPTION

Delivering optimal audience coverage with the ability to adapt to the requirements of the project at hand, the FBT HORIZON VHA 118.2SA represents a step forward in flexible sound reinforcement technology with exceptional sound quality, crafted in Italy with the no-compromise manufacturing excellence for which FBT is known. The FBT HORIZON VHA 118.2SA is a direct radiation ground subwoofer featuring a 1 x 18" long excursion woofer with a 4" coil, and the built-in amplifier is capable of delivering 2500W. The bass reflex cabinet offers substantial energy down to 30 Hz and is ideal for extending and reinforcing the low frequencies of the HORIZON VHA system line array in a ground-stack configuration. It includes presets to create various configurations with cardioid directivity, where some subwoofers are positioned rearward to acoustically cancel the sound pressure behind the cluster. The enclosure, optimized with BEM-type acoustic simulations to reduce resonance and turbulence in the ducts, is built from 0.70" (18 mm) birch plywood with a black polyurea finish. It has six aluminum handles, provisions for four wheels, two M20 stand sockets for horizontal or vertical use, and four support points designed to accommodate accessories in ground-stack configurations in conjunction with the VHA 406 and VHA 112 series. The front of the speaker is covered with a powder-coated perforated steel grille.

## TECHNICAL SPECIFICATIONS

### GENERAL

Code		45690
Configuration	way	Active bass reflex
Low frequency woofer	inch	18 - 4 coil
High frequency driver	inch	---

### ACOUSTIC SPECIFICATIONS

Frequency response (@-6dB)	Hz	30 - Preset dependant
Sensitivity (@1W/1m)	dB	---
MAX SPL (cont/peak)	dB	137/143 half-space
Dispersion	H° x V°	Omnidirectional

### INPUTS & OUTPUTS

Power supply connectors		PowerCon IN/OUT
Input connectors		1 x Male 1 x Female XLR IN/LINK

### POWER SUPPLY

AC power consumption	W	650
Power cord	mt	5
	ft	16.4

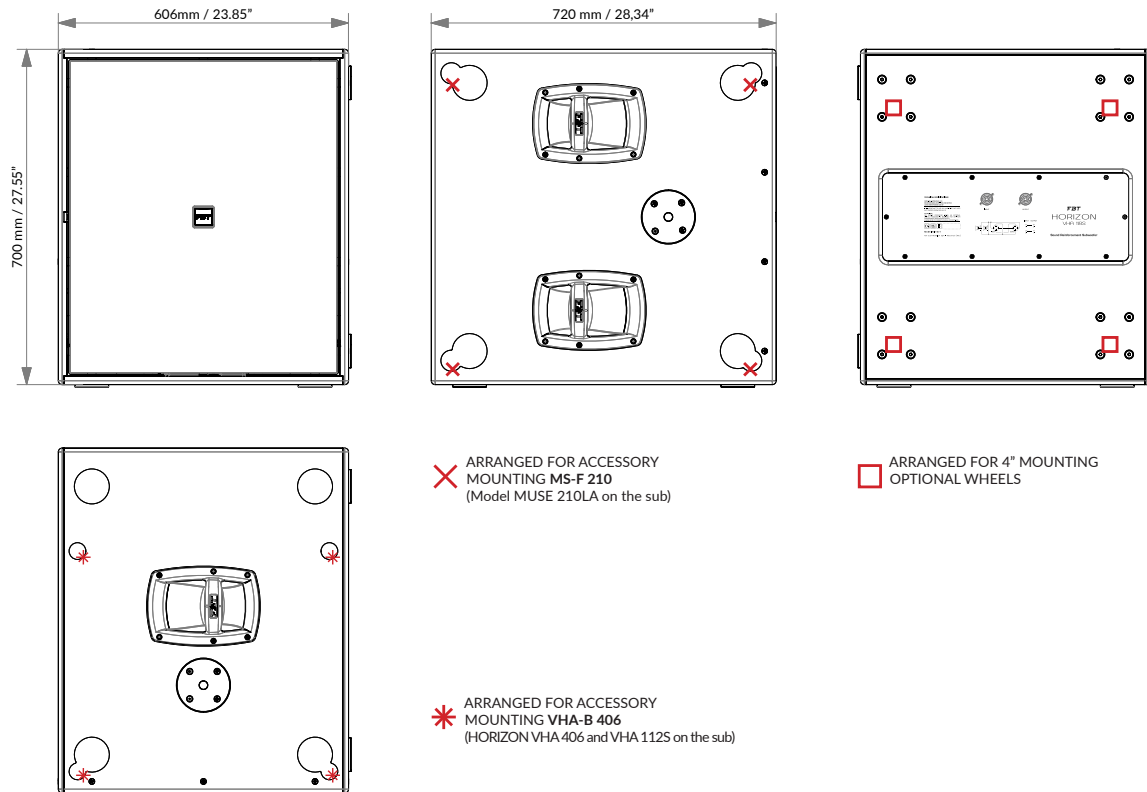
### AMPLIFIER

Built-in amplifier	W	2500
Buit-in amplifier peak	W	5000
Input impedance	Ohm	22k

### MECHANICAL SPECIFICATIONS

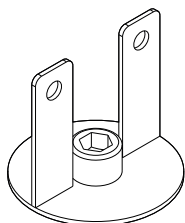
Material	Cabinet	0.70" Birch plywood
	Grille	Steel
Net dimensions (WxHxD)	mm	611 x 711 x 720
	inch	24 x 28 x 28.34
Transport dimensions (WxHxD) with pallet	mm	810 x 900 x 710
	inch	31.89 x 35.43 x 27.95
Net weight	kg	60.80
	lb	134.04
Transport weight with pallet	kg	75
	lb	165.34

## DIMENSIONAL DRAWING



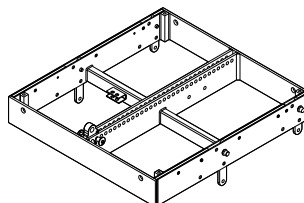
## CONTROL PANEL



**ACCESSORIES**

**MS-J 210**

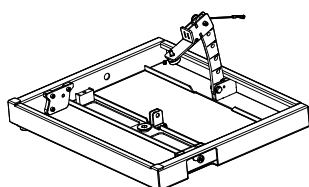
**Metal Joint**  
Code: 39401

ø100 x 92mm  
ø3.93 x 3.62inch  
0.50 kg / 1.10 lb


**MS-F 210**

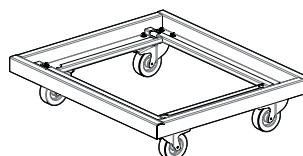
**Flying Bar**  
Code: 38834

686 x 100 x 652mm  
27 x 3.93 x 25.66inch  
30 kg / 66.13 lb


**VHA-B 406**

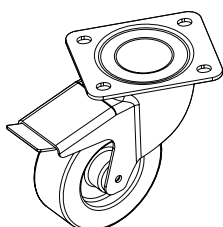
**Metal Base**  
Code: 41783

606 x 73 x 502mm  
23.85 x 2.87 x 19.76inch  
10.30 kg / 22.70 lb


**VHA-T 118**

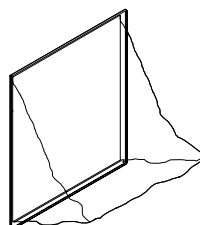
**Trolley with Wheels**  
Code: 42590

785 x 181 x 670mm  
30.9 x 7.12 x 26.37inch  
18.80 kg / 41.44 lb

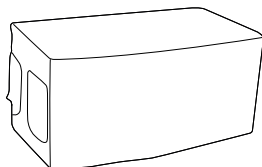

**KBW-1004S**

**4 Wheels Kit with Brake**  
Code: 25197

ø100mm  
ø4inch  
4 kg / 8.81 lb


**VHA-RC 118**

**Rain Cover**  
Code: 42465


**VHA-C 118S**

**Nylon Cover without Wheels**

**VHA-CH 118S**

**Nylon Cover with Wheels**