

TECHNICAL SPECIFICATIONS

GENERAL

Code	Black	47912
	White	47913
Name		CN-U 5
Description		Wall Metal Bracket
MAX n° of speaker		1

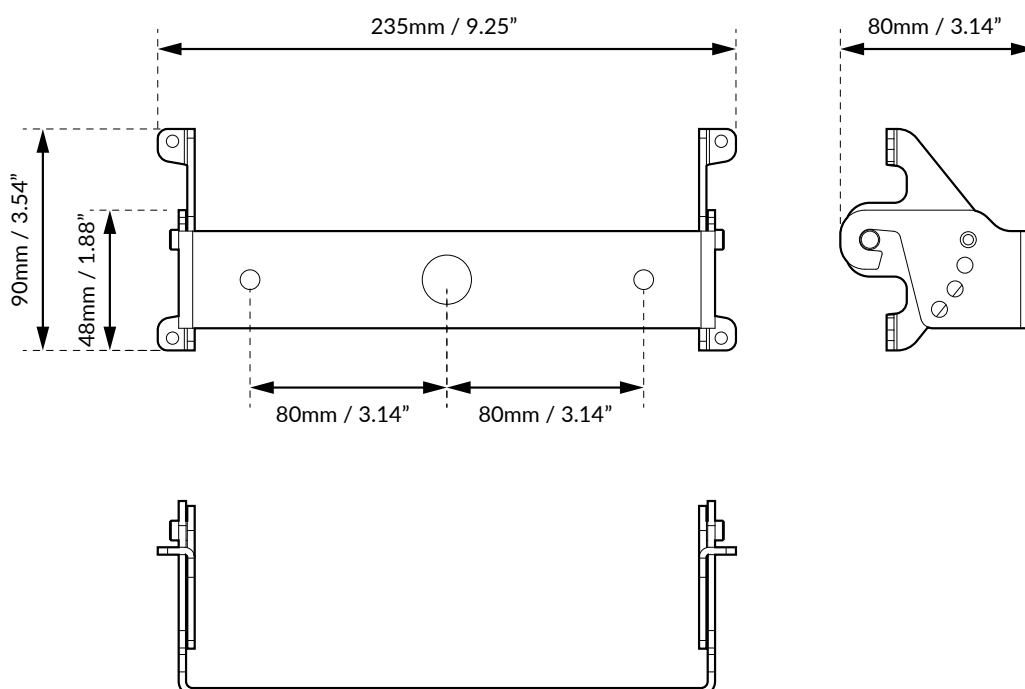
COMPATIBLE PRODUCTS

CANTO Series		5C - 5CT
--------------	--	----------

MECHANICAL SPECIFICATIONS

Material		Steel
Net dimensions (WxHxD)	mm	235 x 90 x 80
	inch	9.25 x 3.54 x 3.14
Transport dimensions (WxHxD)	mm	340 x 60 x 165
	inch	13.39 x 2.36 x 6.50
Net weight	kg	0.50
	lb	1.10
Transport weight	kg	0.60
	lb	1.32

DIMENSIONAL DRAWING



WARNING



The installation of CANTO acoustic speakers, using the suspension accessories described in this manual and the specific installation instructions, must be carried out exclusively by qualified personnel, in full compliance with the rules and safety standards in force in the country where the installation takes place. FBT suspension accessories are designed exclusively for use with CANTO systems and must not be used in combination with any other speaker or device. Every element of the ceiling, wall, or other support where a CANTO system is installed or suspended must be capable of safely supporting the load. All speakers installed in workplaces and/or entertainment venues must, in addition to the main suspension system, be equipped with an independent secondary safety system with adequate load capacity. For fixed installations, regular and specific inspections must always be planned and carried out to verify all components that ensure the long-term safety of the system.

- CANTO speakers must be suspended only using original accessories.
- When selecting the installation location, suspension cables, and mounting supports, ensure that all components are capable of supporting the combined weight of the speaker and suspension accessories with an appropriate safety factor.
- For fixed installations, always schedule and perform regular inspections to verify all components that ensure the long-term safety of the system.
- Never suspend the speakers using the handles; the handles are designed for transporting the speaker, not for suspension.
- Never hang onto or cling to the speaker when it is suspended.

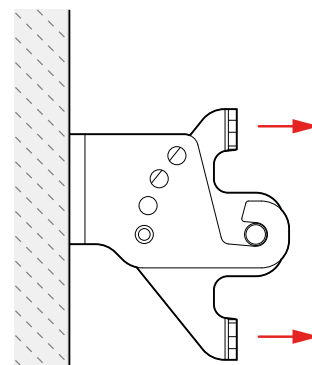
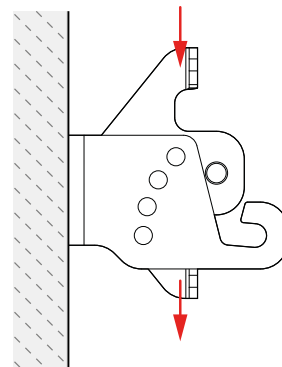
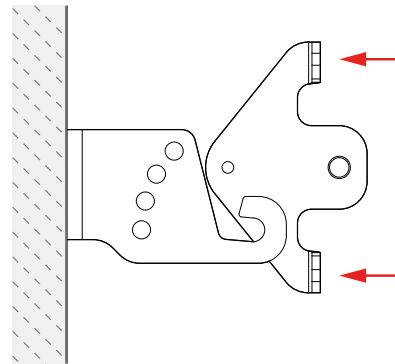
⚠ WARNING | When suspending CANTO models, use only FBT mounting supports. The use of other mounting supports may cause dangerous instability, potentially resulting in harm to people or property.

⚠ WARNING | To prevent harm to people or property, it is essential to equip the system with the provided safety cables when the speaker is wall-mounted. Carefully select the installation area and ensure that the supporting structure is adequate to bear the weight of the speaker.

⚠ WARNING | FBT ELETTRONICA SpA is not responsible for any damage to persons or property resulting from failure to comply with these instructions or failure to verify the safety factor of all components involved in suspending the system.

SUSPENSION BY WALL BRACKET

- Before installation, ensure that the mounting surface (wall) is capable of fully supporting the combined weight of the loudspeaker and the bracket.
- Make sure to securely tighten all screws and bolts after installing the primary bracket, and verify that none have loosened.
- Follow the steps (as shown in the image) to correctly install the loudspeaker onto the primary bracket previously fixed to the wall.
- When adjusting the angle or direction of the loudspeaker, ensure that the rotation locking screw is loosened beforehand—do not force the mechanism.



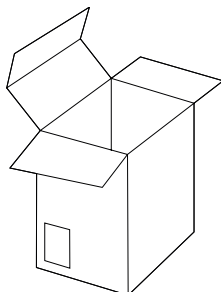
PACKING DISPOSAL SPECIFICATIONS



BOX

CORRUGATED
CARDBOARD

PAPER
Disposal



This product conforms to applicable EU directive requirements.



This product conforms to all applicable Electromagnetic Compatibility Regulations 2016 and all other applicable UK regulations.

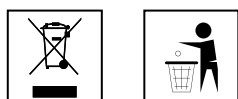


All information included in this operating datasheet has been scrupulously checked; however, FBT is not responsible for any possible mistakes. FBT Elettronica SpA reserves the right to amend products and specifications without notice.

PRODUCT DISPOSAL SPECIFICATIONS



Where affixed on the equipment or package, the barred waste bin sign indicates that the product must be separated from other waste at the end of its working life for disposal. At the end of use, the user must deliver the product to a suitable recycling centre or return it to the dealer when purchasing a new product. Adequate disposal of the decommissioned equipment for recycling, treatment and environmentally compatible disposal contributes in preventing potentially negative effects on the environment and health and promotes the reuse and/or recycling of equipment materials. Abusive product disposal by the user is punishable by law with administrative sanctions.



Check the instructions of your municipality. Separate the components and disposal them properly.
AVOID RELEASE TO THE ENVIRONMENT



SCAN FOR RECYCLING INFO

PLEASE FOLLOW YOUR AREA
DISPOSITION

or docs.fbt.it/filebrowser/share/l2CuWAX-