

# Passive Point Source

## MAIN APPLICATIONS

- House of Worship
- School & corporate audio visual sound reinforcement
- Background music, announcements
- Clubs
- Auditoriums
- Theatres

## MAIN FEATURES

- 2-way coaxial
- Recommended amplifier 120W RMS
- 5" low frequency woofer with 1.5" coil
- 1" high frequency driver with 1" coil
- Input connectors 4-pin Euroblock IN & throu
- Gas injected polypropylene enclosure
- Speaker wall/ceiling mount stand (optional)
- Available in black and white color



## DESCRIPTION

The FBT CANTO 5C two-way speaker system features lightweight in gas injected polypropylene enclosure. Available in black or white finish, the FBT CANTO 5C provides fixed installations with an elegant design suitable for a wide range of applications. The FBT CANTO 5C incorporating a 5" coaxial low frequency woofer with 1.5" voice coil and 1" high frequency driver with 1" voice coil coupled to 90° dispersion. The SPL level of low-distortion audio can provide goes far beyond expectations of such a compact solution with a frequency range of 80Hz to 20kHz; the FBT CANTO 5C provide high fidelity sound for both speech and music applications with a maximum SPL of 117dB. Two fixing points positioned at the rear of the cabinet allow the use of a horizontally and vertically adjustable wall support (WM-45).

## TECHNICAL SPECIFICATIONS

### GENERAL

Code	Black	45506
	White	44897
Configuration	way	2 coax
Low frequency woofer	inch	5 - 1.5 coil
High frequency driver	inch	1 - 1 coil

### ACOUSTIC SPECIFICATIONS

Frequency response (@-6dB)	Hz	80 - 20k
Sensitivity (@1W/1m)	dB	93
MAX SPL (cont/peak)	dB	114 / 117
Dispersion	H° x V°	90 conical
Crossover frequency	Hz	3k
Recommended HP filter	Hz - dB oct	70 - 24

### INPUTS & OUTPUTS

Input connectors		4-pin Euroblock in & thru
------------------	--	---------------------------

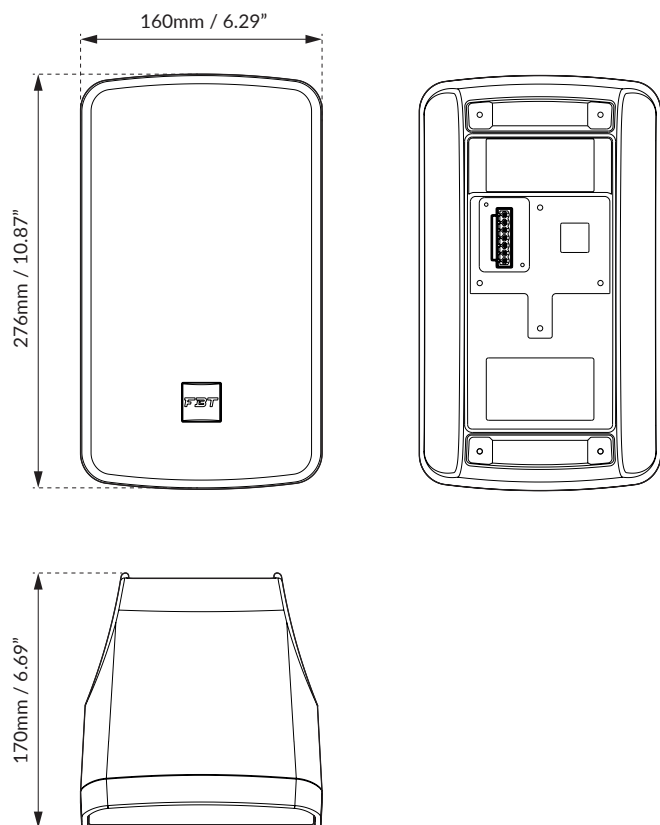
### AMPLIFIER

Recommended amplifier	W RMS	120
Long term power	W	60
Short term power (IEC 268-5)	W	240
Nominal impedance	Ohm	16

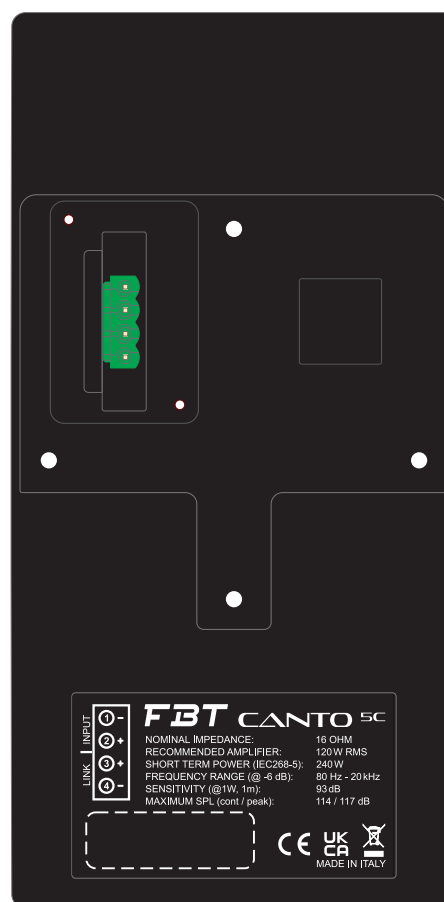
### MECHANICAL SPECIFICATIONS

Material		Gas injected polypropylene
Net dimensions (WxHxD)	mm	160 x 276 x 170
	inch	6.29 x 10.87 x 6.69
Transport dimensions (WxHxD)	mm	225 x 360 x 215
	inch	8.86 x 14.17 x 8.46
Net weight	kg	3
	lb	6.61
Transport weight	kg	3.50
	lb	7.71

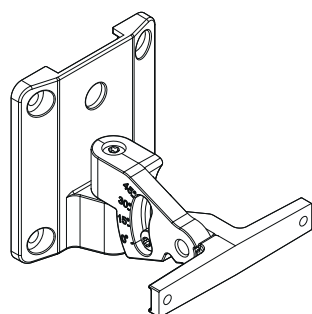
## DIMENSIONAL DRAWING



## CONTROL PANEL



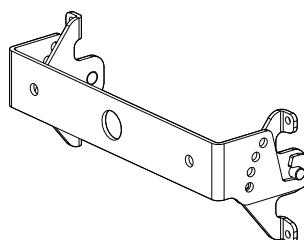
## ACCESSORIES



### WM-45

**Wall Metal Bracket**  
 Black code: 44855  
 White code: 44864

90 x 90 x 92mm  
 3.54 x 3.54 x 3.62inch  
 0.22 kg / 0.48 lb



### CN-U 5

**Wall Metal Bracket**  
 Black code: 47912  
 White code: 47913

235 x 90 x 80mm  
 9.25 x 3.54 x 3.14inch