

Integrated Sound System

MAIN APPLICATIONS

- Corporate events
- Piano bar, live Club, entertainment meetings, seminars & conferences live music
- Private parties & buskers
- Health centres

MAIN FEATURES

- Completely integrated ready-wired sound system
- Ultra lightweight polypropylene enclosure
- 3-way tri-amplified bass reflex system
- 14 channel mixer with 99 presets digital multieffect USB connection
- 15" high efficiency and high excursion custom neodymium magnet woofer with a 3" voice coil
- 2 x 2-way satellite speakers
- 500W RMS class D amplifier for subwoofer
- 2 x 150W RMS class D amplifier for the satellite speakers
- Switch mode power supply
- Designed, engineered and manufactured in Italy

DESCRIPTION

AMICO 10USB is a completely integrated ready-wired sound system offering a convenient plug & play solution. The mixer, amplification, and subwoofer are contained in a single ultra-lightweight, yet extremely sturdy polypropylene enclosure. AMICO's large-diameter wheels and cover/lid with a built-in transport handle ensure maximum portability. The bass-reflex designed B&C subwoofer features a 15" high excursion neodymium magnet woofer and three Class D power amplifiers with switch mode power supply to power the subwoofer and the two satellite speakers. The built-in mixing console has 6 XLR mic inputs with phantom power supply, 2 mono inputs, 4 stereo input channels, 3-band EQ, 99 selectable digital effects with effects send and return controls, 1 effect send, 1 monitor send, headphone, master volume control, and USB input/output to play back music programs/files from a computer or to record from the master audio output of the AMICO 10USB to a computer recording program. The AMICO 10USB provides a quick and easy setup: complete system setup in less than 5 minutes!



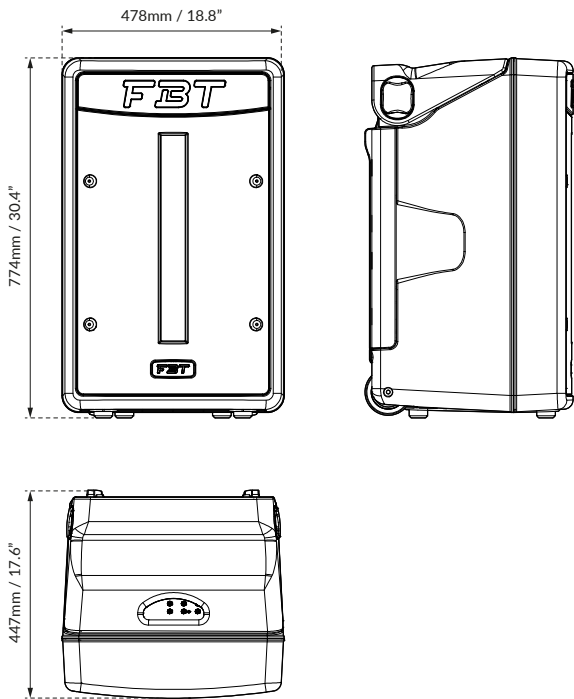
TECHNICAL SPECIFICATIONS

GENERAL		
Code		33187
Configuration	way	3 / 1 SUB + 2 SAT
AMPLIFIER		
Built-in amplifiers	W RMS	500 + 2 x 150
MECHANICAL SPECIFICATIONS		
Material		Polypropylene
Net dimensions (WxHxD)	mm	478 x 774 x 447
	inch	18.8 x 30.4 x 17.6
Transport dimensions (WxHxD)	mm	565 x 880 x 570
	inch	22.24 x 34.65 x 22.44
Net weight	kg	42.50
	lb	93.69
Transport weight	kg	50
	lb	110.23
POWER SUPPLY		
Power cord	mt	5
	ft	16.4

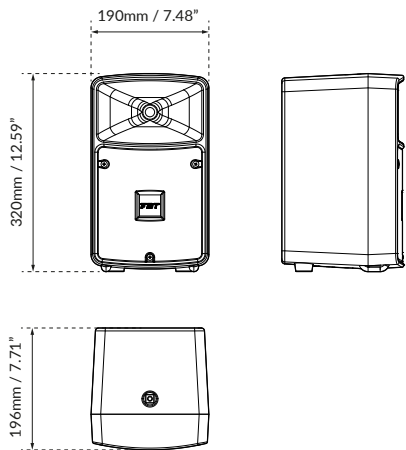
SUBWOOFER		
Low frequency woofer	inch	15 - 3 coil
Frequency response (@-6dB)	Hz	40 - 120
MAX SPL (cont/peak)	dB	124 / 130
Sensitivity (@1W/1m)	dB	97
Dispersion	H° x V°	Omnidirectional
Net dimensions (WxHxD)	mm	478 x 774 x 447
	inch	18.8 x 30.4 x 17.6
Net weight	kg	32.50
	lb	71.65
SATELLITE		
Low frequency woofer	inch	6.5 - 1.5 coil
High frequency driver	inch	1 - 1 coil
Frequency response (@-6dB)	Hz	90 - 20k
MAX SPL (cont/peak)	dB	115 / 125
Sensitivity (@1W/1m)	dB	93.5
Dispersion	H° x V°	90 x 60
Net dimensions (WxHxD)	mm	190 x 320 x 196
	inch	7.48 x 12.59 x 7.71
Net weight	kg	5
	lb	11.02

DIMENSIONAL DRAWINGS

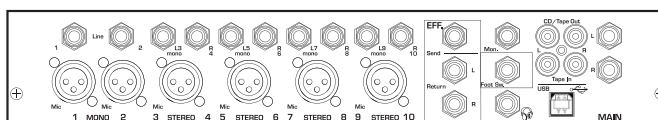
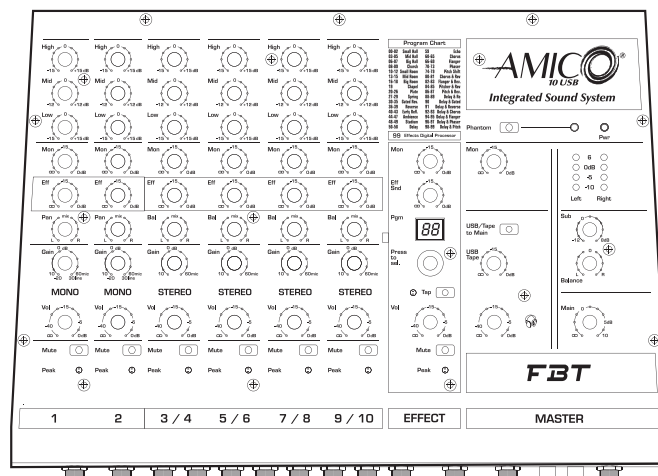
SUB



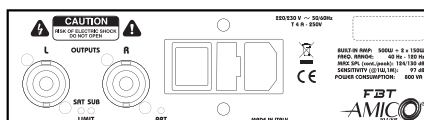
SAT



CONTROL PANEL



SUPPLY AND POWER SECTION



SUPPLIED ACCESSORIES



AMICO KIT

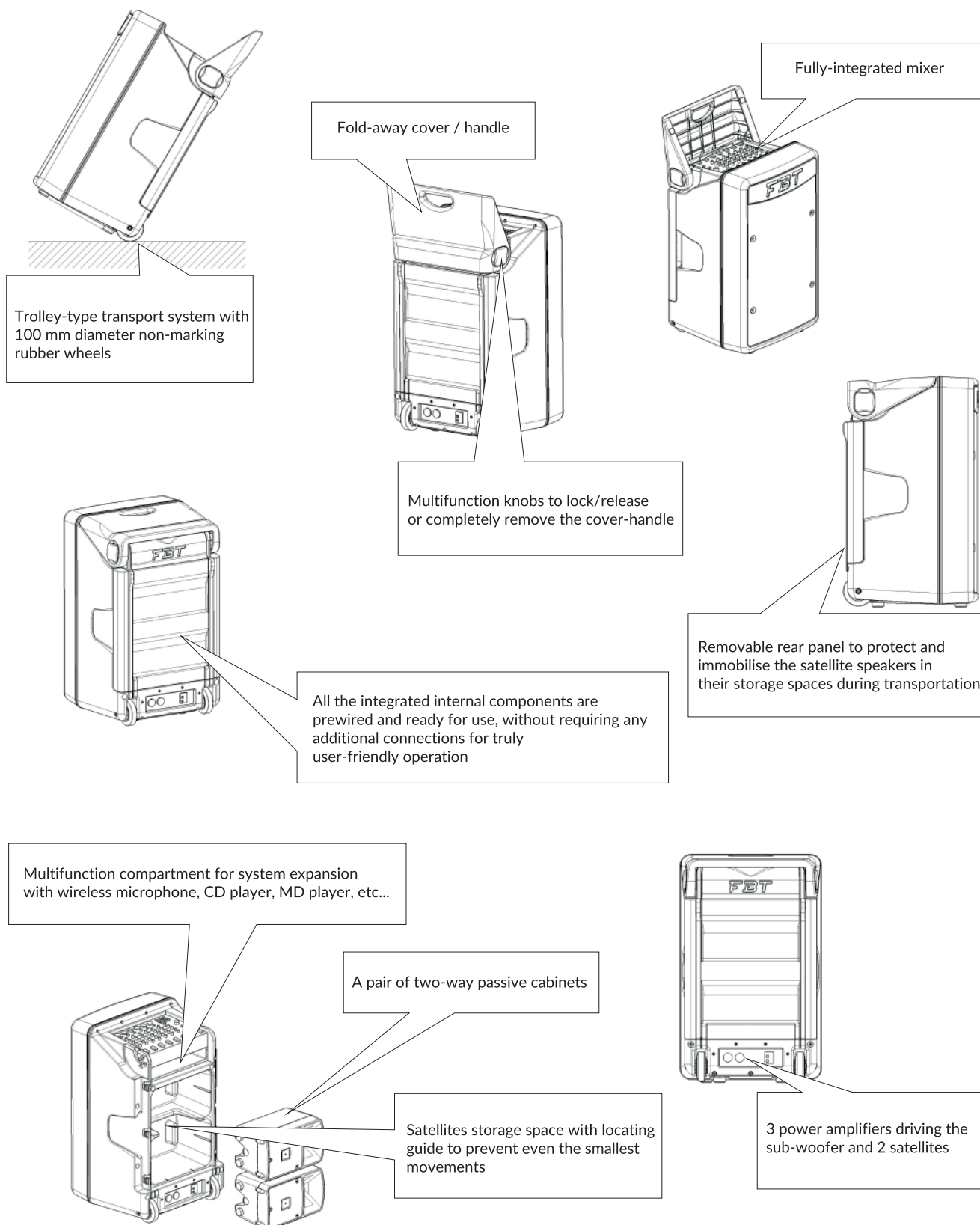
2 x Speakon - Speakon cables

2 x Aluminium Stand for SAT

Code: 20698

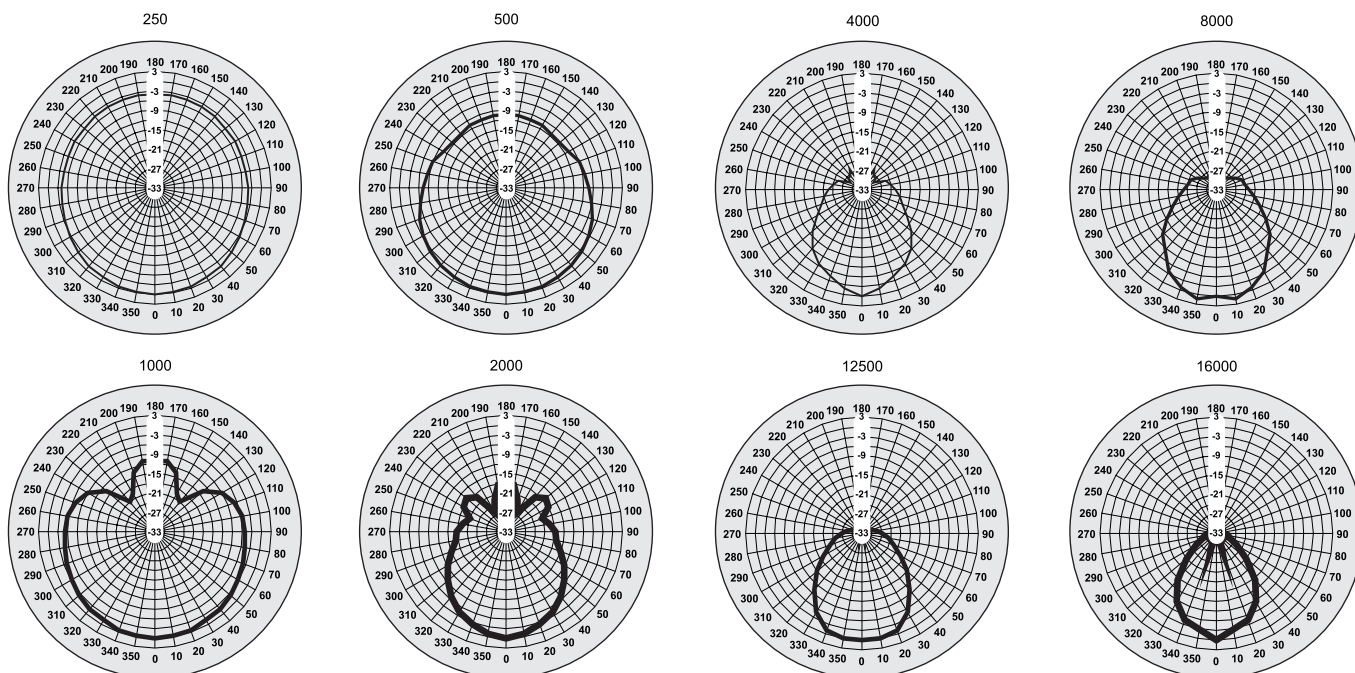
4.5 kg / 9.92 lb

GENERAL FEATURES



DIAGRAMS

Horizontal Polar Diagrams (Hz)



Vertical Polar Diagrams (Hz)

