

Passive Column Line Array

MAIN FEATURES

- 2-way reflex line array
- 2 x 6.5" custom woofer with 1.5" voice coil
- 1.4" neodymium B&C compression HF driver with 2.5" voice coil
- Recommended amplifier: 500W RMS / 80hm
- Frequency response: 65Hz to 20kHz
- MAX SPL: 134dB
- Dispersion: 100°H x 25°V (dependant upon n° of element)
- 2 x Neutrik NL4M Speakon connectors In & link
- 0.47" Birch plywood cabinet with scratch-resistant varnish
- Two diecast aluminium carrying handles
- Top side inclined by 20°
- 1.37" stand socket and 4 lateral insert point
- The system can be used in point source system with the CLA 118S and in vertical cluster with the CLA 406.2 down-fill



DESCRIPTION

VERTUS CLA 206 is a passive column line array in 2-way reflex, featuring a 2 x 6.5" custom woofer with a 1.5" voice coil and 1.4" neodymium B&C compression HF driver with a 2.5" voice coil. VERTUS CLA 206 meet the following performance criteria: recommended amplifier power of 500W RMS / 80hm, capable of achieving 134dB SPL, horizontal coverage angle of 100° and vertical coverage angle of 25°. The bass-reflex line array cabinet offers a frequency response from 65Hz to 20kHz. There is a passive crossover internal; an external processor with FBT presets is required. Using external DSP presets allows for creating various configurations. VERTUS CLA 206 is a 0.47" birch plywood cabinet with scratch-resistant varnish, internal metal bracing and a scratch-resistant coating for stackability. The front is protected by a heavy-duty metal grille, two side handles and a rubber insert for protection and upper/lower anti-slip. The rear-facing input panel provides two Neutrik NL4M Speakon connectors In & link. The accessories available are a flybar for hanging the system (max 3 CLA 206), to which it is possible to add a clamp for tubular hooking, a foldable floor support with 0° and -10° angle, a mechanical joint for coupling two speakers with 0°-20° angle in steps of 5°. Four lateral inserts (two upper and two lower) are designed to accept quick-release pins or M10 screws.

TECHNICAL SPECIFICATIONS

GENERAL

Code		46253
Configuration	way	2 reflex
Low frequency woofer	inch	2 x 6.5 - 1.5 coil
High frequency driver	inch	1.4 x 2.5 coil

ACOUSTIC SPECIFICATIONS

Frequency response (@-6dB)	Hz	65 - 20k
Sensitivity (@1W/1m)	dB	97
MAX SPL (cont/peak)	dB	126 / 134
Dispersion	H° x V°	100 x 25 - Dependent upon n° of element
Recommended HP filter	Hz - dB oct	60 - 24
Recommended Ext. filter		Authorized FBT preset for digital processor or processed amplifier

INPUTS & OUTPUTS

Input connectors		2 x Speakon NL4M In & link
------------------	--	----------------------------

AMPLIFIER

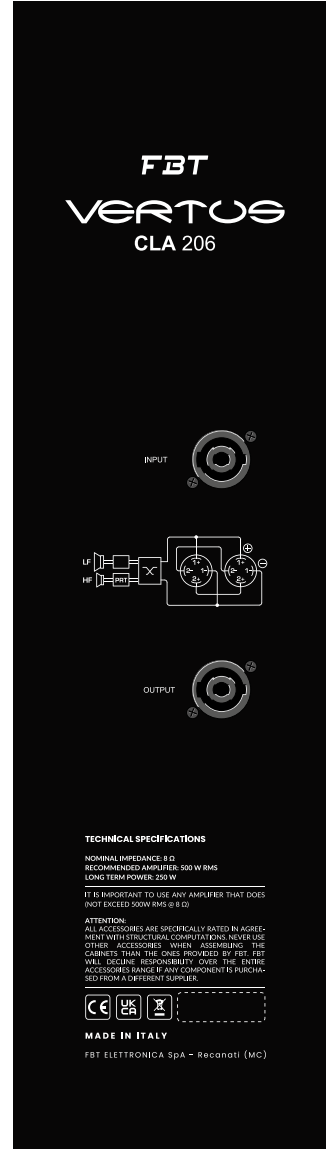
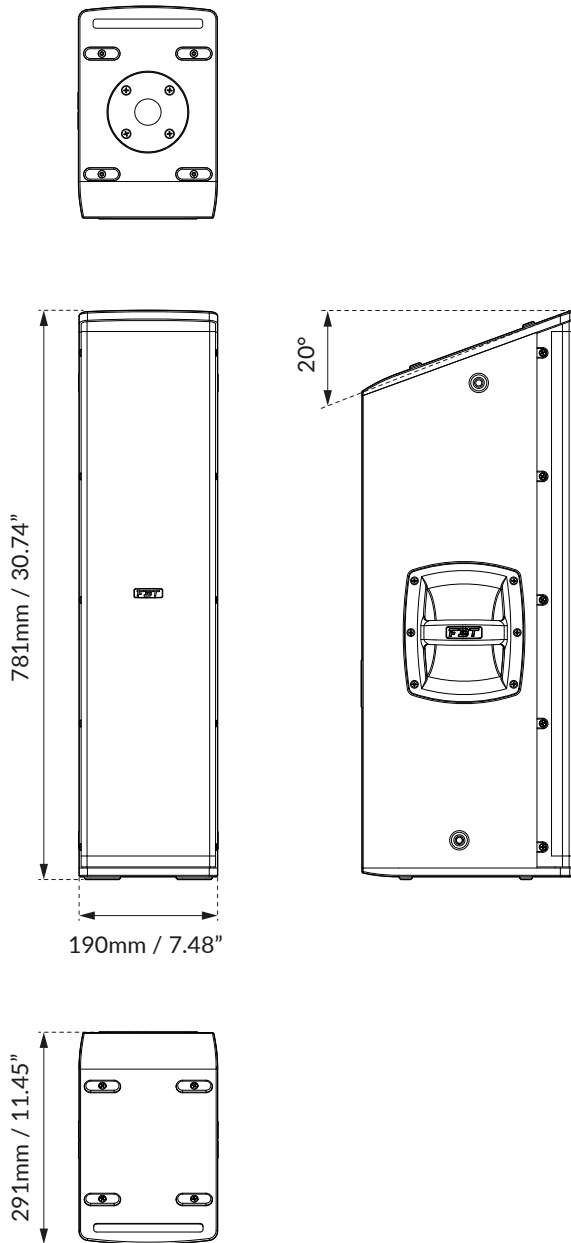
Recommended amplifier	W RMS	500
Long term power	W	250
Short term power (IEC 268-5)	W	1000
Nominal impedance	Ohm	8

MECHANICAL SPECIFICATIONS

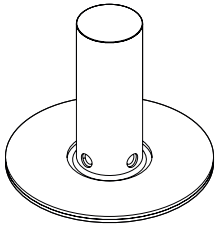
Material	Cabinet	0.47" Birch plywood
	Grille	Metal
Net dimensions (WxHxD)	mm	190 x 781 x 291
	inch	7.48 x 30.74 x 11.45
Transport dimensions (WxHxD)	mm	320 x 890 x 410
	inch	12.59 x 35.03 x 16.14
Net weight	kg	18.37
	lb	40.56
Transport weight	kg	21.87
	lb	48.21

DIMENSIONAL DRAWING

CONTROL PANEL



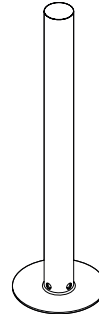
ACCESSORIES



VT-S0 406

Speaker Stand h0
Code: 39904

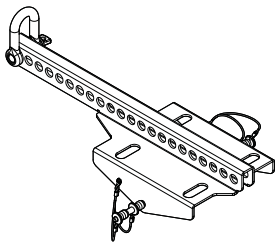
ø110 x 93mm
ø4.33 x 3.66inch
0.50 kg / 1.10 lb



VT-S30 406

Speaker Stand h30
Code: 39903

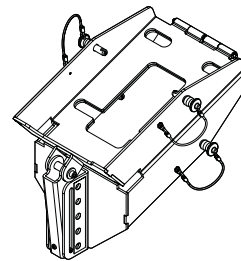
ø110 x 400mm
ø4.33 x 15.74inch
1 kg / 2.20 lb



VT-F 406.2

Flying Bar
Code: 41803

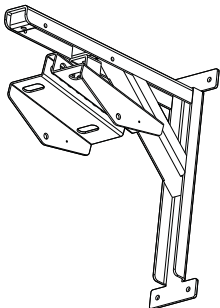
565 x 117 x 200mm
22.24 x 4.63 x 7.87inch
4.50 kg / 9.92 lb



VT-J 406.2

Joint Bar
Code: 41802

398 x 216 x 200mm
15.66 x 7.87 x 7.87inch
7 kg / 15.43

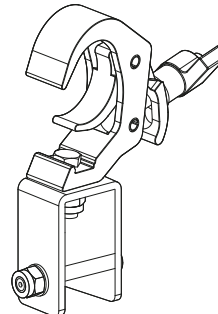


VT-W 406.2

Directional Wall Bracket
Code: 44797

512 x 490 x 122mm
20.17 x 19.29 x 4.82inch
9 kg / 19.84 lb

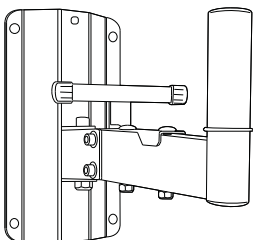
▲ IMPORTANT | Use all holes for wall mounting



VT-T 406

Clamp for Trellis
Code: 41805

152 x 190 x 75mm
5.98 x 7.48 x 2.95inch
0.70 kg / 0.9 lb



WMA 560BK

Directional Wall Bracket
Code: 39332

250 x 250 x 295mm
9.84 x 9.84 x 11.61inch
2.40 kg / 5.29 lb