

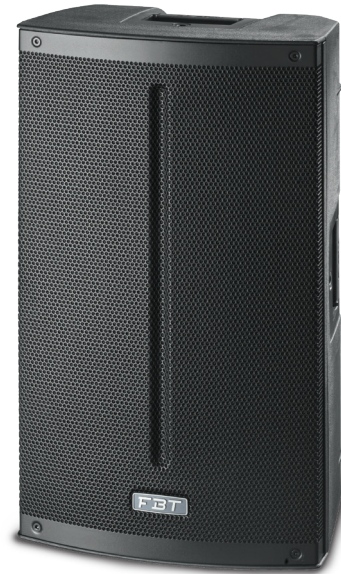
Processed Active Speaker

MAIN APPLICATIONS

- Band P.A.
- Personal monitor
- Small theatres
- Auditoriums
- Piano bar
- DJ
- Stage monitor
- Conference rooms
- Fixed installations in live clubs
- Pubs
- Gyms

MAIN FEATURES

- 2-way bi-amplified system in bass reflex
- Polypropylene molded enclosure
- Woofer custom 15" (LF) / 2.5" voice coil
- 1" throat / 1,4" voice coil HF compression driver
- 1200/300W built-in amplifier (LF/HF)
- Bluetooth 5.0
- 3-channels mixer
- 4 DSP presets
- 30° or 45° monitor taper
- Universal switching mode power supply 100-240Vac
- M10 rigging points



DESCRIPTION

The FBT XLITE 115A series speakers with integrated 3-channels mixer feature lightweight, yet rugged gas injected molded polypropylene cabinet construction. Available in black finish, the FBT XLITE 115A series speakers provide fixed installations with an elegant design that blends into any decor. The asymmetrical shape of the FBT XLITE 115A cabinet also allows use as a powered floor stage monitor. The FBT XLITE 115A is two way design incorporating a 15" low frequency woofer and 1" HF compression driver coupled to a 90°H x 60°V constant directivity horn. With a frequency range of 42Hz - 20kHz the FBT XLITE 115A speaker provide high fidelity sound for both speech and music applications with a maximum SPL of 130dB. The bi-amplified FBT XLITE 115A active speaker feature a 1200W low frequency amp and a 300W high frequency amp. The control panel features a three-channel mixer with two micro-line inputs, a stereo input and a dedicated channel for bluetooth 5.0; two xlr inputs, stereo input, xlr output with ch1 or mix link selector, hp filter, two mic-line selectors, dsp preset selector, bluetooth 5.0 with pairing led. 4 x M10 rigging points built-in into the cabinet along with the optional mounting brackets allow the FBT XLITE 115A speaker to be surface mounted on walls or ceilings. A standard 1.38" speaker stand socket allows the FBT XLITE 115A to be mounted on speaker stand.

TECHNICAL SPECIFICATIONS

GENERAL

Configuration	way	2
Low frequency woofer	inch	15 - 2.5 coil
High frequency driver	inch	1 - 1.4 coil

ACOUSTIC SPEC.

Frequency response	(@-6dB)	42Hz - 20kHz
MAX SPL peak**	dB	125/130
Dispersion	H x V	90° x 60°

POWER SUPPLY

AC Power requirement	W	500
Power cord	mt ft	5 16,4

INPUTS / OUTPUTS

Connectors		XLR IN/OUT, Jack ST
------------	--	---------------------

AMPLIFIER

Internal amplifiers* peak LF/HF	W	1200/300
Input impedance	Ohm	22k

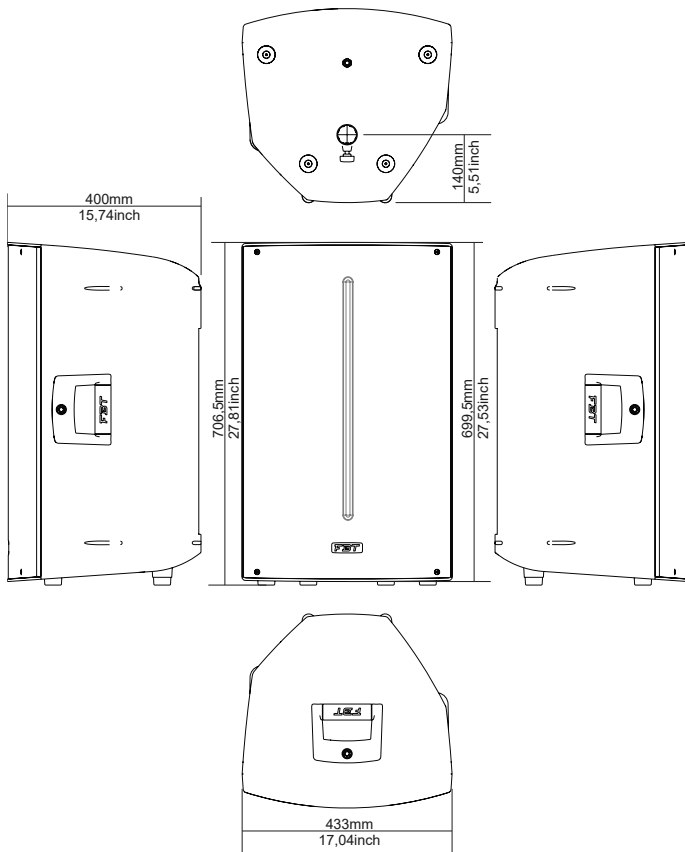
MECHANICAL SPEC.

Material		Polypropylene
Grille		Steel with powder coated black paint finish
Net size (WxHxD)	mm inch	433 x 706,5 x 400 17,05 x 27,80 x 15,75
Net weight	kg lbs	19,3 42,54

* Max.: 2mS burst, rms power on nominal speaker impedance

**Peak SPL: free space, based on max. peak power amp rating and system peak sensitivity, 10mS time average

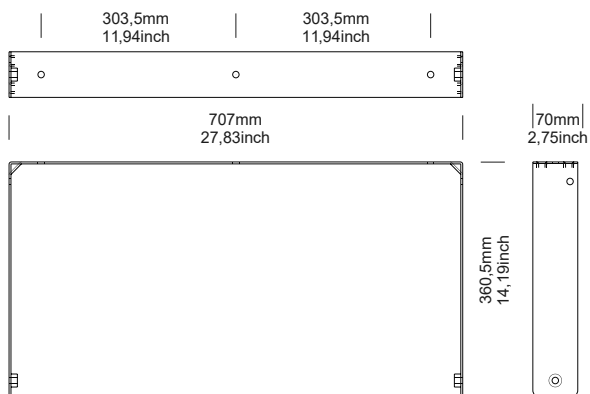
DIMENSIONAL DRAWINGS



CONTROL PANEL

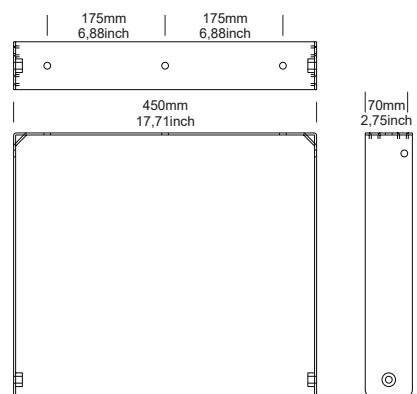


ACCESSORIES



XL-UH15

Wall metal bracket to mount in horizontal position



XL-UV15

Wall metal bracket to mount in vertical position